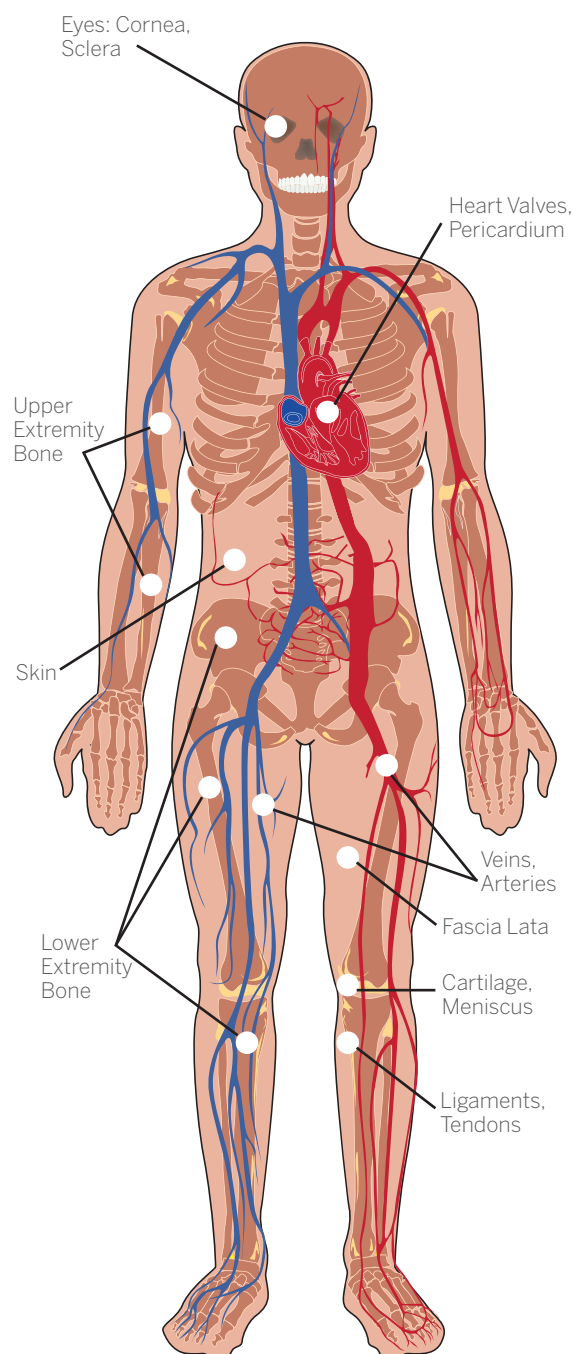


Donated Tissue Types



Donated Human Tissue Type

Possible Applications

Bone

Donated bone tissue can be used to repair bone defects or fractures. It is widely used to restore mobility, reconstruct limbs and rebuild jaws in dental procedures. Bone tissues that can be surgically recovered include long bones from arms and legs, as well as hip bones.

- Neurosurgery
- Cervical and lumbar spinal fusion procedures
- Orthopedic surgery
- Periprosthetic fracture
- Mid-foot fusion procedures
- High tibial osteotomy (HTO)
- Demineralized bone matrix used as bone void fillers
- Dental/oral maxillofacial procedures

Connective Tissues

Ligaments, tendons and cartilage can be used to rebuild joints and restore cartilage surfaces in patients injured through sporting activities, by trauma, or through arthritis or other diseases. Connective tissues are typically recovered from the joints in the legs and arms.

- Joint reconstruction of knee, ankle, hip
- Anterior cruciate ligament (ACL), posterior cruciate ligament (PCL), medial cruciate ligament (MCL) and lateral cruciate ligament (LCL) reconstruction
- Ligamentous repair of hand and foot
- Elbow ligament repair
- Cartilage restoration
- Meniscal repair

Membrane Tissues

Skin (dermis) can be used as a life-saving covering for severe burns. Membrane tissues like pericardium and fascia lata can be used in open heart and urological surgeries, in abdominal wall repair, and in post-mastectomy breast reconstruction. Membrane tissues are typically recovered from the back and the linings around the muscles and heart.

- Glaucoma repair
- Dental procedures
- Periodontal ridge augmentation
- Soft tissue repair augmentation
- Use as tendon to repair injury
- Breast reconstruction following mastectomy
- Hernia or other complex abdominal wall repair cases
- Urological procedures, such as urinary slings for incontinence
- Pelvic floor reconstruction

Cardiovascular Tissues

The transplantation of heart valves can be a life-saving procedure for patients suffering from inherited heart defects or damage due to infection. Aortic and pulmonic valves are removed from the donated heart and preserved until a matching recipient is identified. Donated heart valves are able to be preserved for months or even years.

Veins and arteries are used during heart bypass surgery to re-establish blood circulation in patients with coronary artery disease, and donated veins can help avoid amputation.

- Replacement for damaged heart valves
- Aortic patch grafts
- Coronary and peripheral revascularization

Eyes

Corneas can be used to restore sight for patients with diseases like glaucoma, or as a result of traumatic injury. The sclera is used during the repair, replacement or reconstruction of soft tissue defects in ocular applications.

- Repairs, replacements or reconstruction as a result of eye conditions